

ICONIC
MANAGEMENT



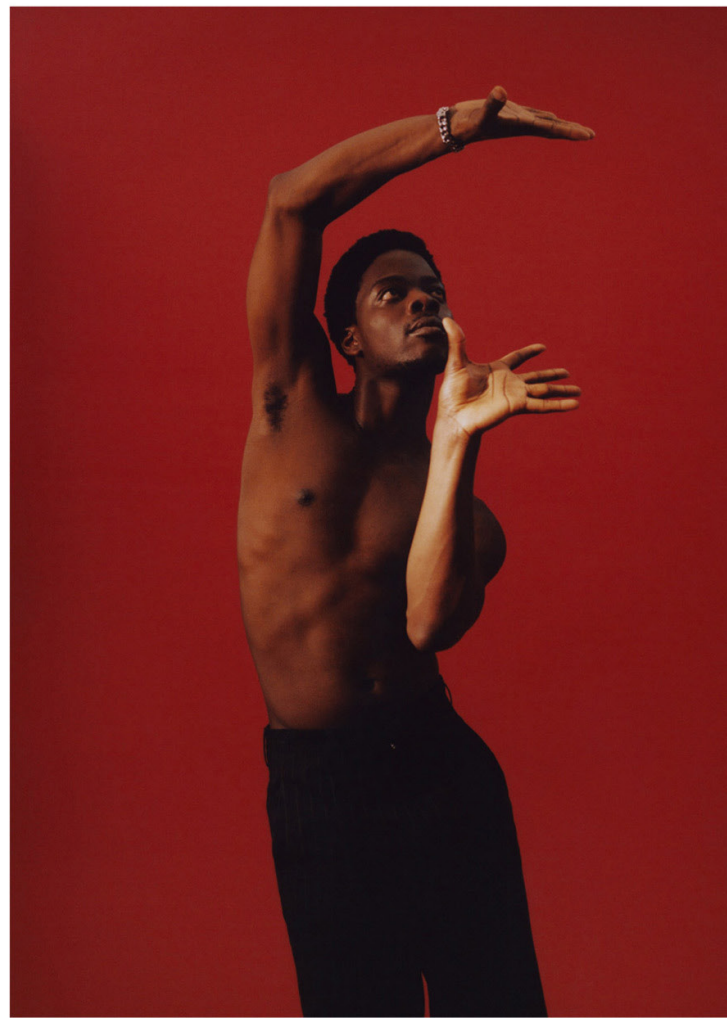
'Femdelafem the Gardener' Oyewole is a creative director/multi disciplinary visionary artist who uses any medium to create unique experiences and bring people together.



FEMI
OYEWOLE

BIOGRAPHY

Born in Nigeria, raised in London and currently living in Berlin. Femi is a creative thinker, a committed doer, a cordial worker, and unique innovator.



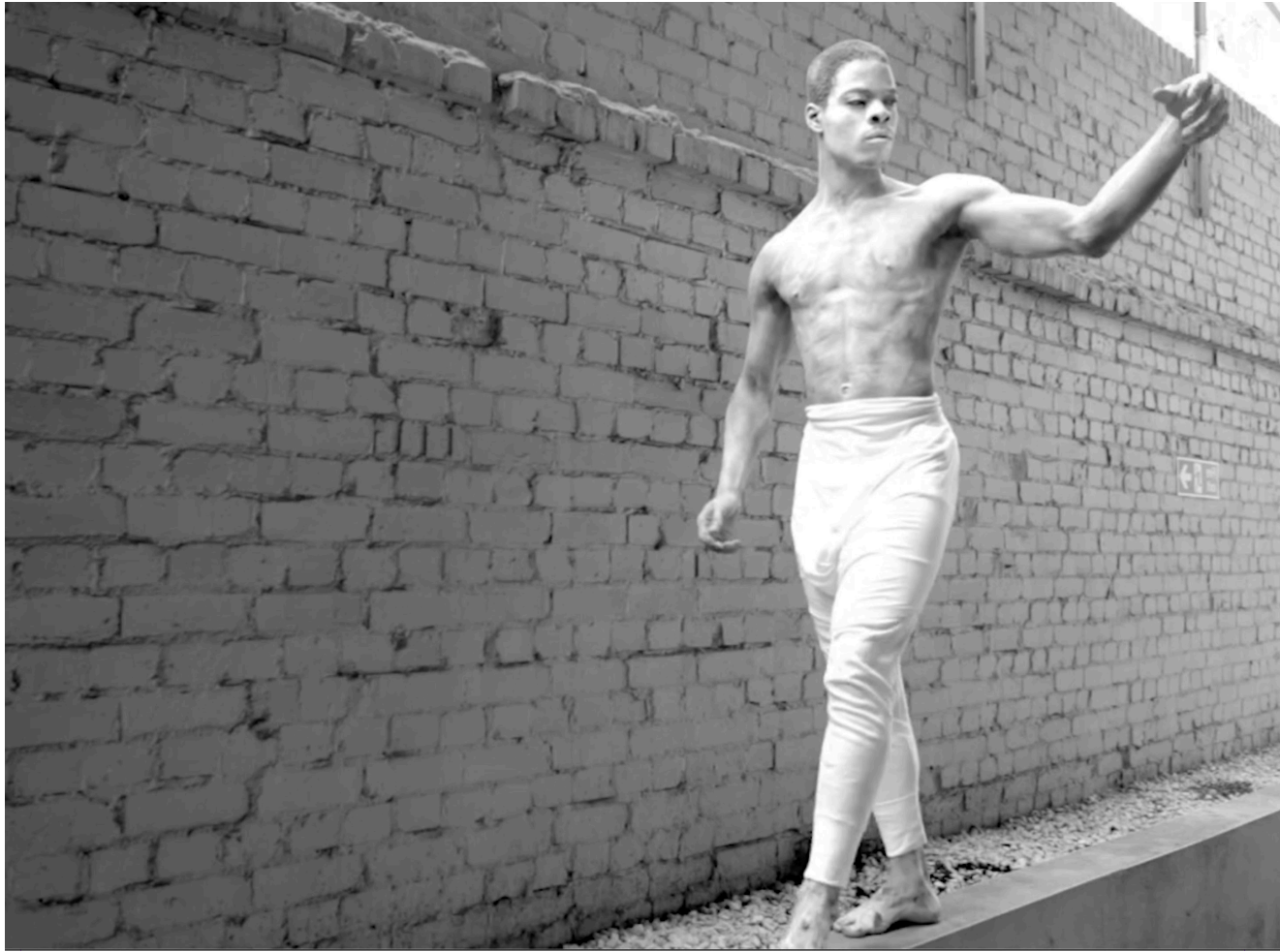
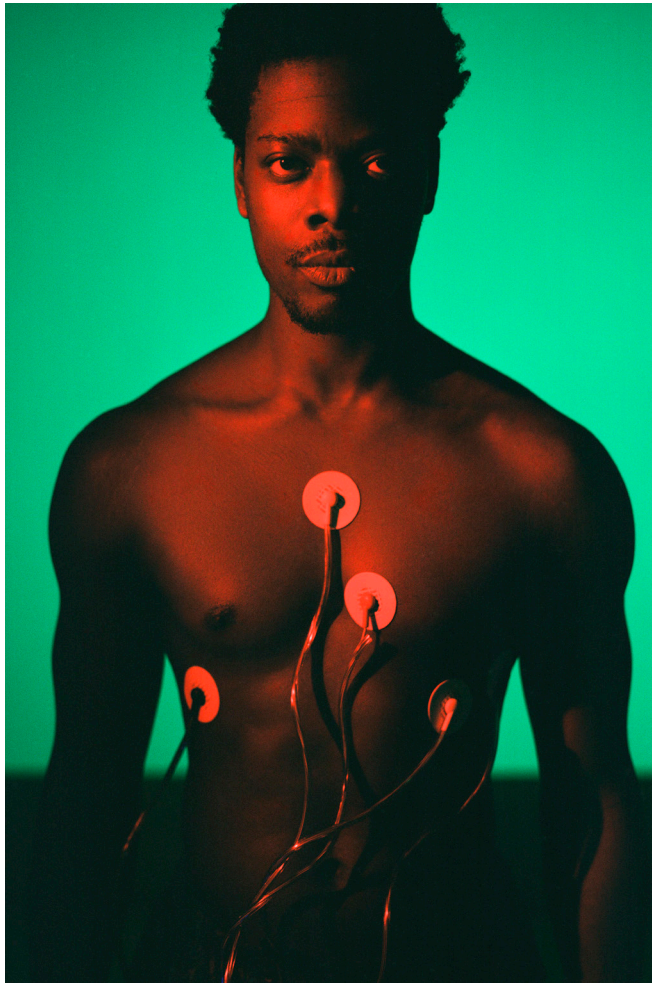
STUDIES & WORK

Femi studying at BRIT School and then graduated from London Contemporary Dance School with a BA Hons degree in Contemporary dance.

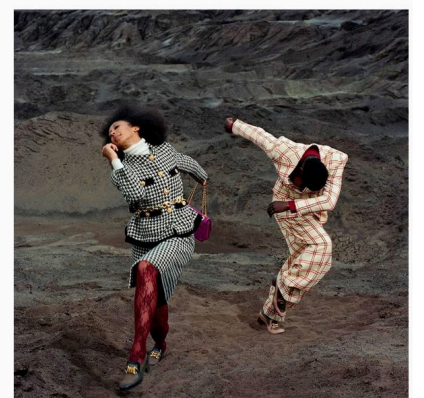
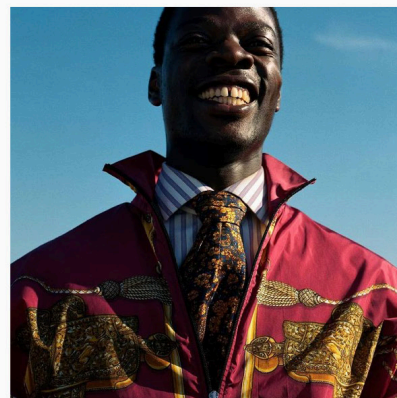
He has worked with BlueMan Group, Will Tuckett's Faeries, Simeon Qsyee, Ivan Blackstock, DV8 Physical Theatre, Protein Dance Company, Mayowa's World and much more.

Currently he is the CEO of BlackBrownBerlin.com, and is a DJ, an actor, a model, and a dancer. Amongst other professions, Femi continues to work on contributing his efforts to make the world a better place.





@femdelafemthegardener



FEMI OYEWOLE

Agent Elisabeth Aare [ea@iconicmanagement.](mailto:ea@iconicmanagement)

T. +49 171 8364452

